



**Nowodvorski**  
LIGHTING

## CATALOGUE CARD

LUMINAIRE MODEL

**GROOVE**  
**9316**

CATALOGUE GROUP  
COUNTRY OF ORIGIN

**KATALOG 2022**  
**MADE IN POLAND**

LIGHT SOURCE **GU10 ES111**  
LIGHT SOURCES TYPE **Replaceable**  
MAXIMUM WATTAGE **2x75W**  
LAMP INCLUDES SOURCE OF LIGHT **No**  
NUMBER OF LIGHT SOURCES **2**  
IP **IP20**  
**Interior use**



PACKAGE DIMENSIONS (L/W/H) **24,5cm/13,5cm/13,5cm**

NET/GROSS WEIGHT **1,23kg/1,33kg**

ASSEMBLY METHOD **Direct assembly**

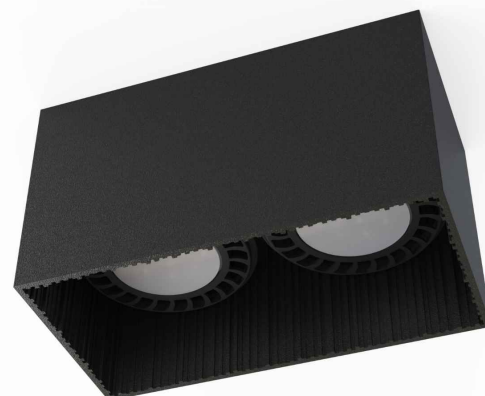
LEADING/SUPPLEMENTARY COLOR **Black**

MATERIALS **Painted aluminum**

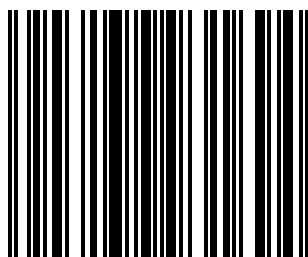
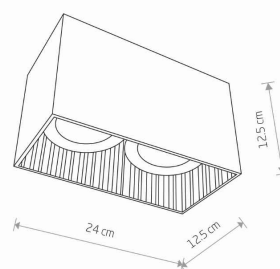
STYLE **Modern**

ELECTRICAL SECURITY CLASS **I**

POWER SUPPLY **~220-230V/50/60Hz**



### DIMENSIONS



5 903139931694