



CorePro LEDtube EM/ Mains T8



CorePro LEDtube 1500mm 20W 865 T8

Philips CorePro LEDtubes are the quick and easy way to replace T8 fluorescent or other LED tubes with a fast pay back time. Not only does the Core range of LEDtubes require a low initial investment, but LED energy efficiency also delivers instant savings that you can bank on over a long and reliable lifetime. Plus, with the same lamp size and light distribution as fluorescent alternatives, you'll never know the difference. There are two ways to install these LED tubes: Rewire your existing fluorescent-based luminaires so the CorePro LEDtubes work directly on the Mains. Or simply change the fluorescent starter to an LED starter that can be used with your Electromagnetic ballasts.

Warnings and Safety

- NOTE: The overall energy efficiency and light distribution of any installation that uses these lamps will be determined by the design of the installation.
- Installation must be done according to the installation diagrams provided with the lamp or available online. Installation must be done by a certified professional.

Product data

General Information			
Lighting Technology	LED	Luminous Flux	2,200 lumen
Flux measurement reference	Sphere	Color Designation	Cool Daylight
Switching Cycle	200,000	Correlated Color Temperature (Nom)	6500 K
Nominal lifetime	50,000 hour(s)	Luminous Efficacy (rated) (Nom)	110 lm/W
Cap-Base	G13 [Medium Bi-Pin Fluorescent]	Color Consistency	<6
		Color rendering index (CRI)	80
		LLMF At End Of Nominal Lifetime (Nom)	70 %
		Flickering value (PstLM)	1
		Stroboscopic effect value (SVM)	0.9
Light Technical			
Color Code	865 [CCT of 6500K]		
Beam Angle (Nom)	240 degree(s)		

CorePro LEDtube EM/Mains T8

Operating and Electrical	
Line Frequency	50 to 60 Hz
Input Frequency	50 to 60 Hz
Power Consumption	20 W
Lamp Current (Nom)	105 mA
Starting Time (Nom)	0.5 s
Warm-up time to 60% light	0.5 s
Power Factor (Fraction)	0.9
Voltage (Nom)	220-240 V

Temperature	
Ambient temperature range	-20 °C to 45 °C
T-Case Maximum (Nom)	60 °C

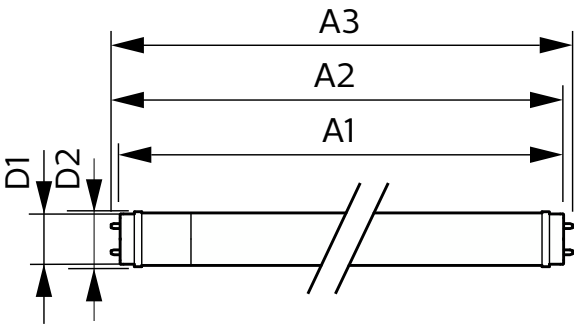
Controls and Dimming	
Dimmable	No

Mechanical and Housing	
Bulb Finish	Frosted
Bulb Material	Glass
Product Length	1,500 mm
Bulb Shape	Tube, double-ended

Approval and Application	
Energy Efficiency Class	E
Energy Saving Product	Yes
Approval Marks	RoHS compliance CE marking KEMA Keur certificate
Energy Consumption kWh/1000 h	20 kWh
EPREL Registration Number	1384730
CE mark	Yes
EU RoHS compliant	Yes

Product Data	
Full product code	871951445983000
Order product name	CorePro LEDtube 1500mm 20W 865 T8
Order code	929003547502
Local order code	CPLDTB152W865T8
Numerator - Quantity Per Pack	1
Numerator - Packs per outer box	20
Material number (12NC)	929003547502
Full product name	CorePro LEDtube 1500mm 20W 865 T8
EAN/UPC - Case	8719514459847

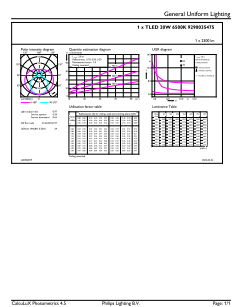
Dimensional drawing



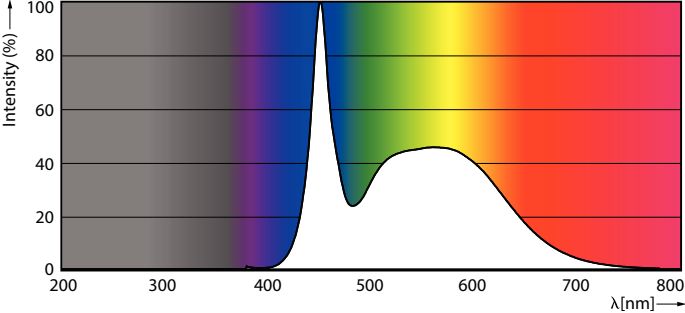
Product	D1	D2	A1	A2	A3
CorePro LEDtube 1500mm 20W 865 T8	25.7 mm	28 mm	1,500 mm	1,507.1 mm	1,514.2 mm

CorePro LEDtube EM/Mains T8

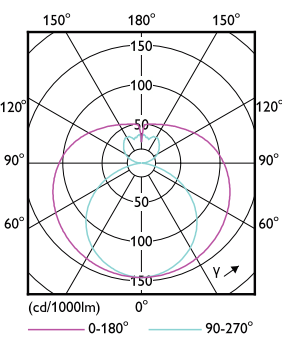
Photometric data



General uniform lighting - CorePro LEDtube 1500mm 20W 865 T8

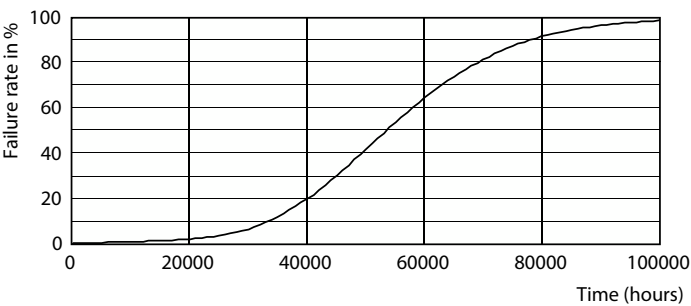


Spectral Power Distribution Colour - CorePro LEDtube 1500mm 20W 865 T8

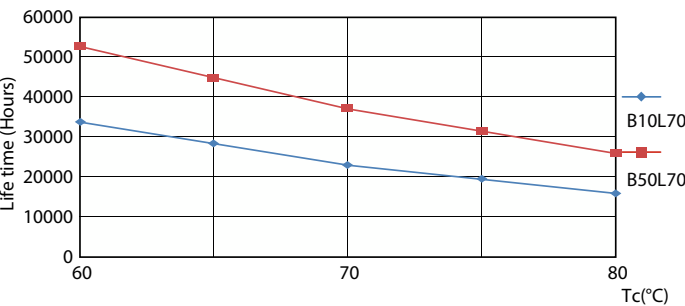


Light Distribution Diagram - CorePro LEDtube 1500mm 20W 865 T8

Lifetime



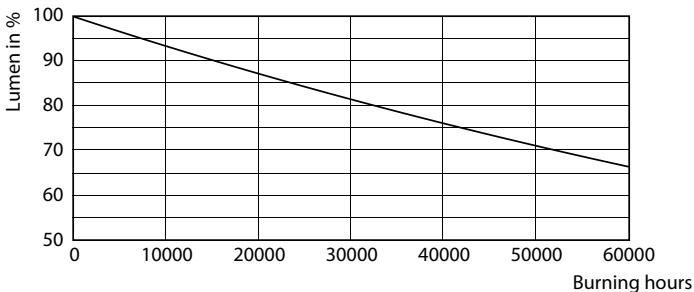
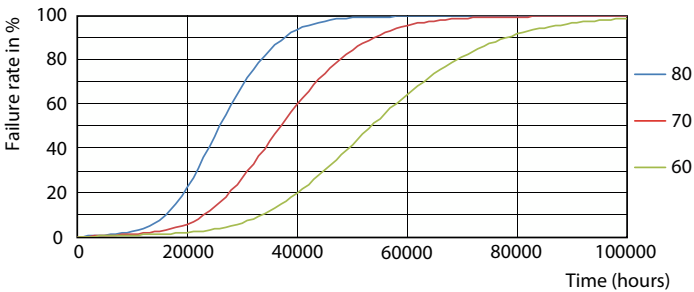
Life Expectancy Diagram - CorePro LEDtube 1500mm 20W 865 T8



Life Expectancy Diagram

CorePro LEDtube EM/Mains T8

Lifetime



Life Expectancy Diagram

Lumen Maintenance Diagram - CorePro LEDtube 1500mm 20W 865 T8

